

HP Service Manager

Software Version: 9.41

For the supported Windows® and UNIX® operating systems

SM Doctor User's Guide

Document Release Date: September 2015
Software Release Date: September 2015



Legal Notices

Warranty

The only warranties for HP products and services are set forth in the express warranty statements accompanying such products and services. Nothing herein should be construed as constituting an additional warranty. HP shall not be liable for technical or editorial errors or omissions contained herein.

The information contained herein is subject to change without notice.

Restricted Rights Legend

Confidential computer software. Valid license from HP required for possession, use or copying. Consistent with FAR 12.211 and 12.212, Commercial Computer Software, Computer Software Documentation, and Technical Data for Commercial Items are licensed to the U.S. Government under vendor's standard commercial license.

Copyright Notice

© 1994-2015 Hewlett-Packard Development Company, L.P.

Trademark Notices

Adobe® is a trademark of Adobe Systems Incorporated.

Microsoft® and Windows® are U.S. registered trademarks of Microsoft Corporation.

Oracle and Java are registered trademarks of Oracle and/or its affiliates.

UNIX® is a registered trademark of The Open Group.

Linux® is the registered trademark of Linus Torvalds in the U.S. and other countries.

For a complete list of open source and third party acknowledgements, visit the HP Software Support Online web site and search for the product manual called HP Service Manager Open Source and Third Party License Agreements.

Documentation Updates

The title page of this document contains the following identifying information:

- Software Version number, which indicates the software version.
- Document Release Date, which changes each time the document is updated.
- Software Release Date, which indicates the release date of this version of the software.

To check for recent updates or to verify that you are using the most recent edition of a document, go to: <https://softwaresupport.hp.com/>.

This site requires that you register for an HP Passport and to sign in. To register for an HP Passport ID, click **Register** on the HP Support site or click **Create an Account** on the HP Passport login page.

You will also receive updated or new editions if you subscribe to the appropriate product support service. Contact your HP sales representative for details.

Support

Visit the HP Software Support site at: <https://softwaresupport.hp.com>.

This website provides contact information and details about the products, services, and support that HP Software offers.

HP Software online support provides customer self-solve capabilities. It provides a fast and efficient way to access interactive technical support tools needed to manage your business. As a valued support customer, you can benefit by using the support website to:

- Search for knowledge documents of interest
- Submit and track support cases and enhancement requests
- Download software patches
- Manage support contracts
- Look up HP support contacts
- Review information about available services
- Enter into discussions with other software customers
- Research and register for software training

Most of the support areas require that you register as an HP Passport user and to sign in. Many also require a support contract. To register for an HP Passport ID, click **Register** on the HP Support site or click **Create an Account** on the HP Passport login page.

To find more information about access levels, go to: <https://softwaresupport.hp.com/web/softwaresupport/access-levels>.

HPSW Solutions Catalog accesses the HPSW Integrations and Solutions Catalog portal website. This site enables you to explore HP Product Solutions to meet your business needs, includes a full list of Integrations between HP Products, as well as a listing of ITIL Processes. The URL for this website is <https://softwaresupport.hp.com/group/softwaresupport/search-result/-/facetsearch/document/KM01702710>.

About this PDF Version of Online Help

This document is a PDF version of the online help. This PDF file is provided so you can easily print multiple topics from the help information or read the online help in PDF format. Because this content was originally created to be viewed as online help in a web browser, some topics may not be formatted properly. Some interactive topics may not be present in this PDF version. Those topics can be successfully printed from within the online help.

Contents

Introduction	6
Target audiences	6
Supported platforms	6
Supported Service Manager versions	6
Modes	6
Running Service Manager Doctor	7
Product Overview	8
Information collected	8
GUI mode	8
Service Manager Doctor Main window	8
Report window	10
Advanced Save window	11
Preference dialog box	12
Connect to database dialog box	13
Connect to SM Server dialog box	14
Command-line mode	14
Command References	17
Service Manager Runtime commands (sm)	17
Extended Service Manager commands (esm)	18
Configuration commands (conf)	21
Database commands (db)	22
Operating System commands (os)	23
Web Service commands (ws)	25
Save commands (save)	25
Set commands (set)	27
Run commands (run)	28
Clear commands (clear)	29

Help command (help)	29
'-dlog' parameter	29
Configuration Validation Rules	31
Configuration rule file	31
Considerations for updating the rule file	31
Validation results	32
CmdOnDemand.xml	33
HTML Log Snippets	35
Rule Configuration File Snippets	36
Error References	38
Troubleshooting	41
Send Documentation Feedback	42

Introduction

Service Manager Doctor enables support engineers to collect configuration and diagnosis data from Service Manager. This tool eliminates the need of excessive exchanges of emails between support engineers and customers before engineers can have all needed information to analyze a reported incident.

Target audiences

- Service Manager customers
- Service Manager support engineers

Supported platforms

This tool supports platforms that are allowed in the Service Manager server compatibility matrix. For details, see [HP Support matrices](#) on the Software Support Online site.

Supported Service Manager versions

7.1x and 9.x

Modes

The Service Manager Doctor Tool can run in two modes:

- Command-line
- Graphic user interface (only on Windows)

Running Service Manager Doctor

Run the following command in the `smdoctor` folder directly under the server installation directory to start the tool in GUI mode (only for Windows):

```
smdoctor_gui.bat
```

Run one of the following commands in the `smdoctor` folder directly under the server installation directory to start the tool in command-line mode:

```
smdoctor.bat (for Windows)
```

```
smdoctor.sh (for UNIX/Linux)
```

When running Service Manager Doctor commands with logging enabled, the tool generates a `SMDoctor_Report_<hostname>.html` and `SMDoctor_Report_<hostname>.txt` logs in the current directory, where `<hostname>` is the host name of the Service Manager server. For example: `run -all -dlog` or `run -all -zip`.

Note: If the SQL Server database is used, go to <https://www.microsoft.com/en-us/download/details.aspx?id=11774> and download the Microsoft JDBC Driver for SQL Server 4.1. Follow the install instructions to install the driver. The file `sqljdbc41.jar` must be in the installation folder of the driver.

Check whether the system environment variable "CLASSPATH" exists. If not, create it and set the value to the absolute path of the `sqljdbc41.jar` file; otherwise, add the absolute path of the file to the value of "CLASSPATH".

Product Overview

This section describes the usage of the Service Manager Doctor Tool.

Information collected

This tool collects the following types of information:

- SM server configurations and reports
- Operating system configurations
- Database configurations on the database server
- Service Manager server logs
- List of files in the %SM_HOME%RUN, %SM_HOME%RUN/lib/endorsed, and %SM_HOME%RUN/lib folders
- Additional configurable data collected by third-party tools, such as supportTool.sh and generateSchema.sql.

GUI mode

Follow these instructions when running the Service Manager Doctor Tool in GUI mode.

Service Manager Doctor Main window

The GUI mode of the Service Manager Doctor Tool allows you to easily perform a full health check with a simple click and then it displays a detailed health report in a new window. Additionally, you can use the Actions menu item to save certain files from the Service Manager server, including these options:

- sm.ini
- sm.cfg
- Service Manager logs

- List of files in the %SM_HOME%RUN folder
- List of files in the %SM_HOME%RUN/lib folder
- List of files in the %SM_HOME%RUN/lib/endorsed folder
- Iwssofmconf.xml
- SM client configuration
- licfile.txt
- udp.xml
- udpcluster.xml
- All these types of information (available with a “Save all above items” option)

In a complex, vertically-scaled configuration, the Service Manager Doctor Tool parses the `sm.ini` and `sm.cfg` files to locate all possible logs that are scattered on the server and packages them into a zip file.

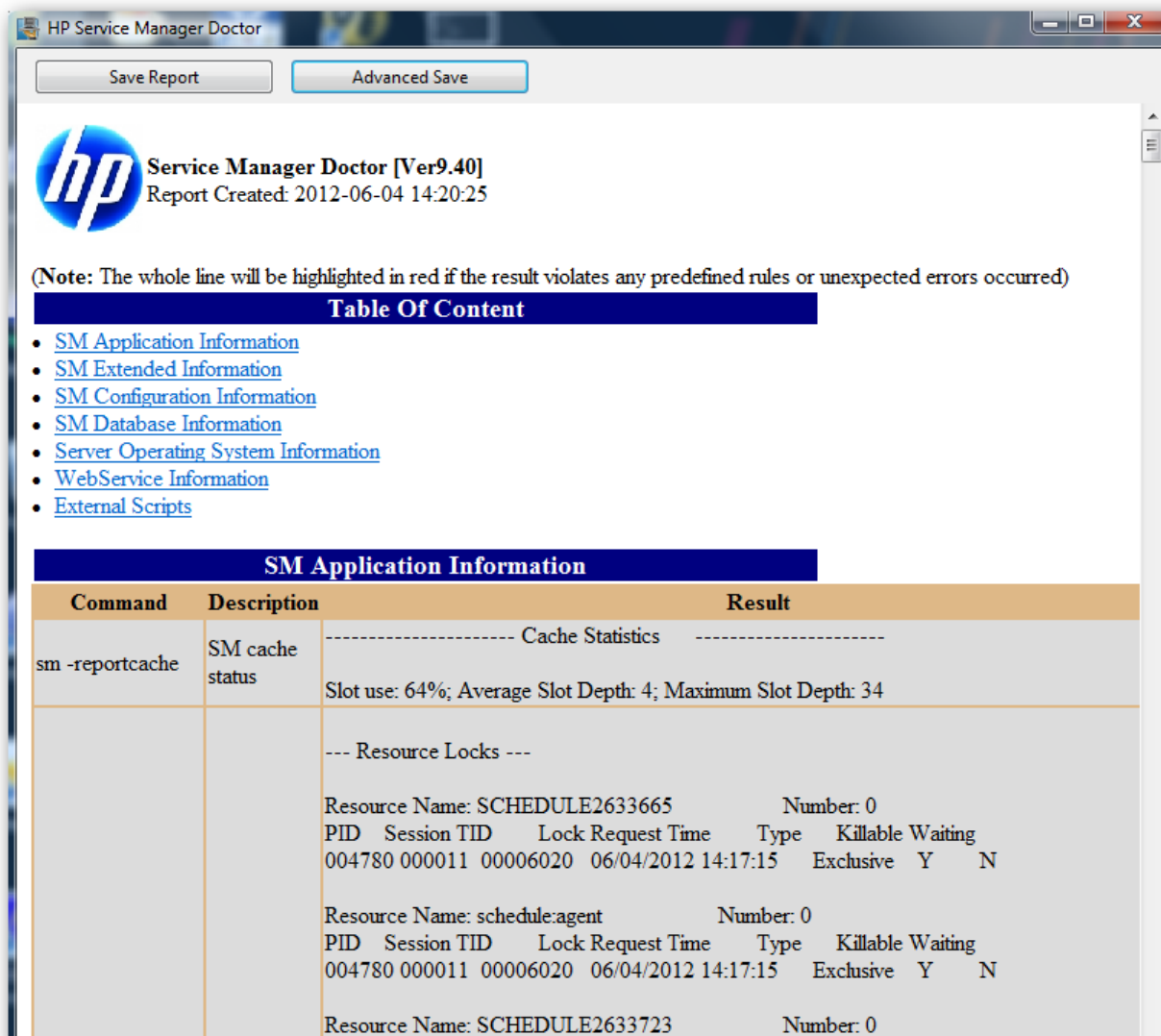
You can click **Health Check** to perform health check multiple times. The latest report overwrites previously generated reports. However, the right pane of the main console window displays all check history.

The Service Manager Doctor Main window is shown in the screenshot below:



Report window

The GUI mode shows the report in the Report window:



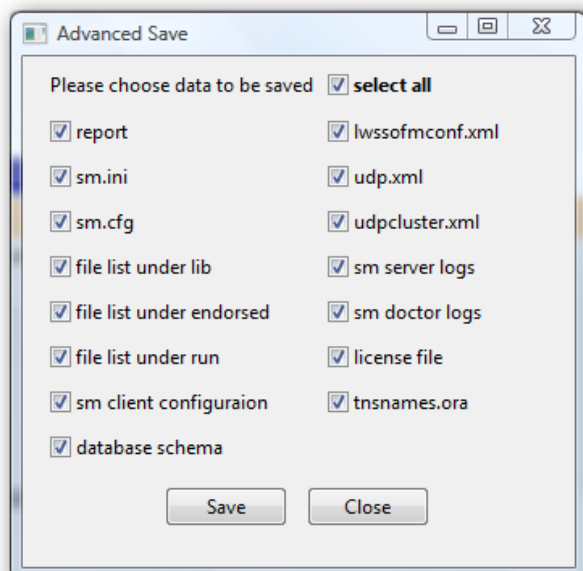
Advanced Save window

Advanced Save allows you to select specific data that you want to save. By default, all the items are selected. You can select the **select all** check box on the **Advanced Save** dialog box to select or clear all the items.

The Advanced Save option is available only after you run a health check. Additionally, the **report** and **sm doctor logs** save items are available only on the **Advanced Save** dialog box.

Note: If the total size of the server logs is too large for shipping, you can check a few items each time and save the log files in several small zip packages.

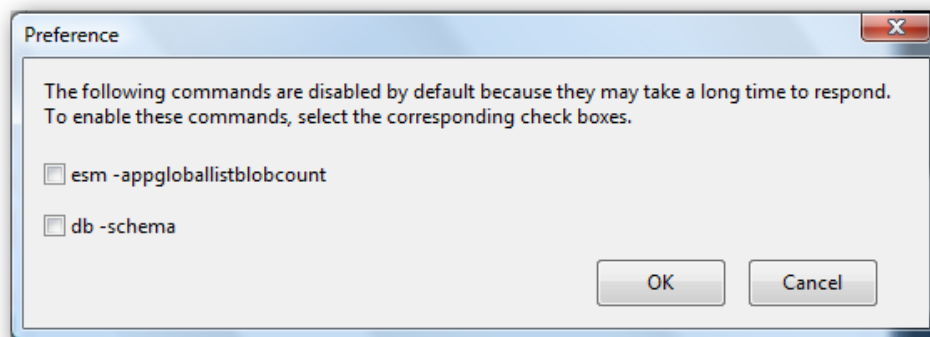
The Advanced Save window is shown in the screenshot below:



Preference dialog box

The `esm -appglobalistblobcount` and `db -schema` commands are disabled by default because they may take a long time to respond. Each of these commands could take more than 10 minutes, depending on the actual environment. You can enable these commands by selecting the corresponding check boxes in the **Preference** dialog box.

The Preference dialog box is shown in the screenshot below:

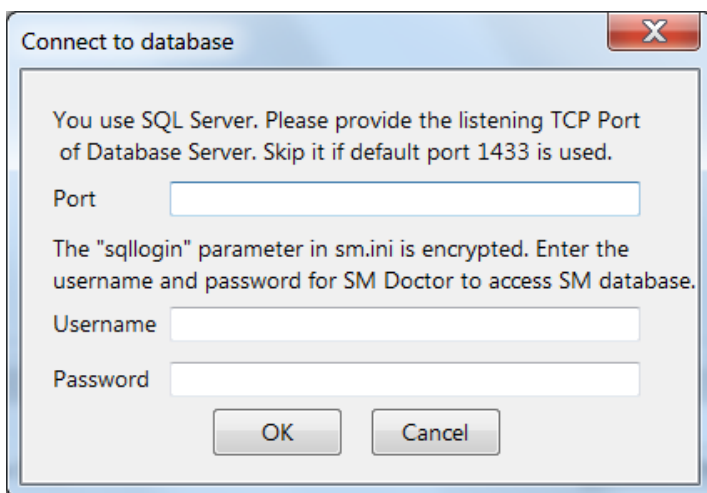


Note: In command-line mode, you can run `set -globalistcheck 1` and `set -schemacheck 1` to enable these commands.

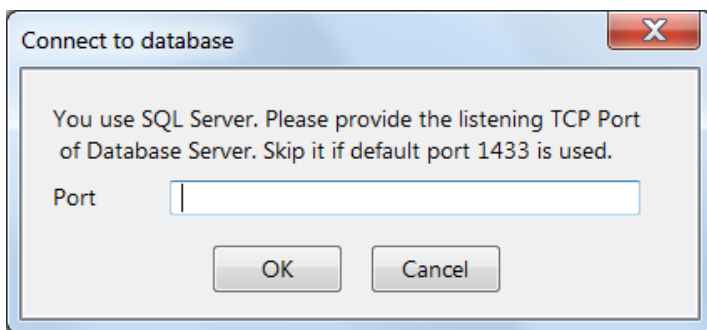
Connect to database dialog box

Based on the database that Service Manager uses and whether the `sqllogin` parameter is encrypted in the `sm.ini` file, Service Manager Doctor displays different fields in the Connect to database dialog box to prompt you for the log-in information of the Service Manager database.

- If SQL Server is used and the `sqllogin` parameter is encrypted, Service Manager Doctor prompts you for the listening TCP port, user name, and password, as shown below:

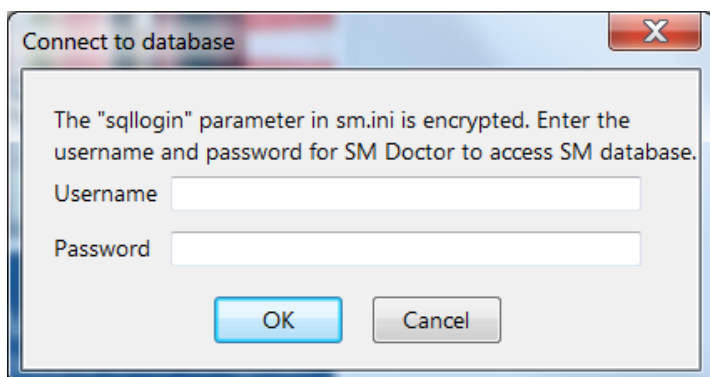


- If SQL Server is used but the `sqllogin` parameter is not encrypted, Service Manager Doctor prompts you for the listening TCP port, as shown below:



- If a database other than SQL Server is used and the `sqllogin` parameter is encrypted, Service

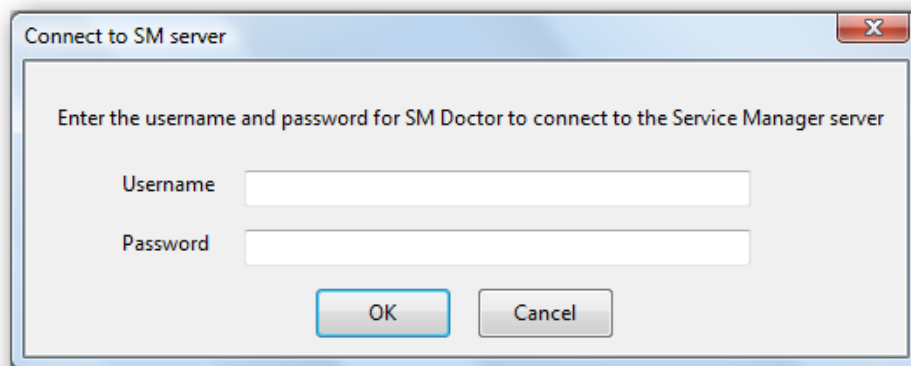
Manager Doctor prompts you for the user name and password, as shown below:



Connect to SM Server dialog box

Service Manager Doctor prompts you for the username and password of the Service Manager server if the `esm -appglobalistblobcount` command is enabled.

The Connect to SM Server dialog box is shown in the screenshot below:



Command-line mode

The command-line mode of the Service Manager Doctor Tool allows you to run the tool more flexibly. You can run specific commands or command groups to collect certain types of information. You can also choose to type "run -all -zip" to package all data that is collected in the current directory. Eventually, the command-line mode generates `SMDoctor_Report_<hostname>.html` and `SMDoctor_Report_`

<hostname>.txt logs in the current directory, where <hostname> is the host name of the Service Manager server.

The Command-line mode is shown in the screenshot below:

```
***** Welcome to Service Manager Doctor *****
*****          Version 9.40                      *****
*****
*****      run -all : run all commands            *****
*****      help  : show all commands             *****
*****      exit  : close SM Doctor               *****
*****
***** Copyright (c) 2011 HP Corporation          *****
*****          All rights reserved              *****
>help
*** Note: "run -all -zip" collects and zips all data to sm_doctor_saved.zip to current directory ***

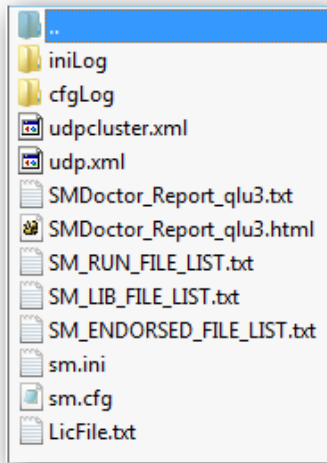
Usage: db [command option] [command option] [...]
Options:
  -all      Run all db commands
  -dlog     Log the command running results, please use this option with other options when results are returned
  -help     Help information for db commands
  -info     Database server information
  -list     Database list
  -schema   Database table/index schema
  -timezone Database server timezone
  -version  Database server version

Usage: esm [command option] [command option] [...]
Options:
  -all      Run all SM extended commands
  -appbp    SM app best practice information
  -appfieldmigration(-appfm) SM app table field check
  -appglobalistblobcount(-appgl) SM app globalists valuelist length
  -apphotfix SM app hotfix information
  -apppatch SM app patch information
  -apprecordcount(-apprc) SM app table record count
  -apptablemerge(-apptm) SM app table merge check
  -autopass SM server autopass version
  -dlog     Log the command running results, please use this option with other options when
  -help     Help information for SM extended commands
  -javaversion SM server java version
  -keystore  SM certificate check
  -perf     SM process CPU and memory information
  -pingclusternodes(-ping) Ping other sm nodes in current cluster
  -port     SM server port status

Usage: conf [command option] [command option] [...]
Options:
  -all      Run all conf commands
  -cfg      sm.cfg content
  -dbinst   SM database server instance
  -dbtype   SM database server type
  -dlog     Log the command running results, please use this option with other options when results are returned
  -env      System environment settings
  -help     Help information for conf commands
  -ini      sm.ini content
```

Note: If the sm_doctor_saved.zip file generated in command-line mode is too large for shipping, you can unzip the package and repackage them into smaller zip packages.

The sm_doctor_saved.zip file has the following folder structure:



Command References

This section describes the usage of commands when you are running the Service Manager Doctor Tool in command-line mode. The command-line mode of Service Manager Doctor provides 10 groups of commands. When you try to run an invalid Service Manager Doctor command, the command-line mode returns an error message. For more information, see ["Error References" on page 38](#).

Service Manager Runtime commands (sm)

Service Manager Runtime commands allow you to run regular Service Manager commands in the Service Manager Doctor Tool. Therefore, you can use this command-line mode as a command-line console, except that it provides tool-specific commands. For example, you can run `sm -reportcache -reportlocks` to check both the cache and locks in one single command.

We do not recommend that you run commands that require options or that return no command results, such as `sm -version -log:version.txt` and `sm -httpport:XXX`.

The timeout for Service Manager Runtime commands is 50 seconds.

Option	Description	Usage
-reportstatus	Retrieves the Service Manager status.	sm -reportstatus
-reportlbstatus	Retrieves the Service Manager load balancer status.	sm -reportlbstatus
-reportcache	Retrieves the Service Manager cache data.	sm -reportcache
-reportipc	Retrieves the semaphore data.	sm -reportipc
-reportlocks	Retrieves the lock status.	sm -reportlocks
-reportlic	Retrieves the Service Manager license status.	sm -reportlic
-version	Retrieves the Service Manager version. Note: <ul style="list-style-type: none">• Always available regardless of whether the Service Manager service is running or not.• Currently supports the reporting of versions 7.1x and 9.30	sm -version

Option	Description	Usage
-appversion	Retrieves the Service Manager application version.	sm -appversion
-sqlverifyconnection	Verifies the database connection.	sm -sqlverifyconnection
-reportshm	Retrieves the Service Manager shared memory.	sm -reportshm
-reportsem	Retrieves the Service Manager semaphore.	sm -reportsem
-all	Runs all Service Manager Runtime commands at one time and returns the results in the output.	sm -all
-help	Displays Help information. <div style="background-color: #f0f0f0; padding: 5px; border: 1px solid #ccc;"> <p>Note: If the -help option is used together with other options, only Help information is returned.</p> </div>	sm -help
-dlog	Outputs the command result to html and txt files.	sm -all -dlog

Note: The `sm` commands listed in the table above, except the `-all`, `-help`, and `-dlog` options, are enabled by default and will be run when you run the `sm -all` or `run -sm` command. These `sm` commands are defined in the `CmdOnDemand.xml` file. You can edit this file to enable additional commands to be run. The `CmdOnDemand.xml` file can even include commands to launch external diagnostic tools. For example, the Service Manager Doctor tool is shipped with a shell script tool (`supportTool.sh`), which collects diagnostic information, such as stack traces of core system files, logs, and configuration files, and saves it in a `$HOSTNAME_smsupport.tar` file. See "[CmdOnDemand.xml](#)" on page 33 for more information.

Extended Service Manager commands (esm)

Extended Service Manager commands return Service Manager specific information that the current Service Manager Runtime commands may not return but is helpful for diagnosis.

The timeout for Extended Service Manager commands is 60 seconds.

Option	Description	Usage
-javaversion	Retrieves the Java runtime environment version of the Service Manager server (the JRE version in the	esm -javaversion

Option	Description	Usage
	Service Manager RUN directory)	
-apppatch	Retrieves Service Manager application patch information (in the patchrelversioninfo table).	esm -apppatch
-apphotfix	Retrieves Service Manager application hotfix information (in the patchrelversioninfo table).	esm -apphotfix
-appbp	Retrieves Service Manager Best Practice information (in the bpreleaseinfo table).	esm -appbp
-port	Retrieves Service Manager server ports (as returned by the 'netstat' command).	esm -port
-perf	Retrieves Service Manager process CPU and memory information (as returned by the following system-specific commands). <ul style="list-style-type: none"> • Windows: tasklist • Linux: top -p • Unix: ps -p) 	esm -perf
-autopass	Retrieves the Service Manager autopass version. Pre-9.20: ...\\Hewlett-Packard \HPOvLIC\About.txt 9.20 and later: The AutoPassJ*.jar version	esm -autopass
-apprecordcount	Retrieves the record count for Service Manager tables: <ul style="list-style-type: none"> • syslog • stathistory • eventin • systemperform • systemtotals • clocks 	esm -apprecordcount

Option	Description	Usage
	<ul style="list-style-type: none"> activity <p>Note: The threshold for validation is 10 KB.</p>	
-apptablemerge	Retrieves Service Manager table merge information, such as whether M2 or M3 tables exist for the cm3r, cm3rpage, cm3t, and incidents tables.	esm -apptablemerge
-appfieldmigration	Retrieves information about certain fields: <ul style="list-style-type: none"> The “approval” and “members” fields in the cm3groups table. The “related_cis” field in the cirelations table. 	esm -appfieldmigration
- appgloballistblobcount	Retrieves the length of the Service Manager application globallists value list. <p>Note: The threshold for validation is 1 KB.</p>	esm - appgloballistblobcount
-keystore	Checks the Service Manager certificate, including these files: <ul style="list-style-type: none"> Server.keystore Trustedclients.keystore cacerts <p>Note: When running this command, if the server certificate passwords (keystorePass, truststorePass and ssl_trustedClientsPwd) are encrypted in the sm.ini file, SM Doctor prompts the user to enter the passwords in the command line (command line mode) or enter them in a dialog (GUI mode).</p>	esm -keystore
-pingclusternodes	Sends “ping” and “traceroute” messages to other Service Manager nodes in the current cluster. <p>Maximum ping times: 4</p>	esm -pingclusternodes

Option	Description	Usage
	Maximum hops: 10	
-all	Runs all Extended Service Manager commands at one time and returns the results in the output.	esm -all
-help	Displays Help information. Note: If the -help option is used together with other options, only Help information is returned.	esm -help
-dlog	Outputs the command result to html and txt files.	esm -all -dlog

Configuration commands (conf)

Configuration commands extract configuration items from the sm.cfg and sm.ini files, which will be used to diagnose server configuration issues against certain predefined validation rules.

Option	Description	Usage
-dbtype	Retrieves database server type.	conf -dbtype
-dbinst	Retrieves the database server instance.	conf -dbinst
-ini	Retrieves the sm.ini content. Note: The sm.ini content can also be captured in GUI mode, where the validation result is included in the command output.	conf -ini
-cfg	Retrieves the sm.cfg content. Note: The sm.cfg content can also be captured in GUI mode, where the validation result is included in the command output.	conf -cfg
-env	Retrieves system environment settings (returned by the env operating system command)	conf -env
-all	Runs all Configuration commands at one time and returns the results in the output.	conf -all

Option	Description	Usage
-help	Displays Help information. Note: If the -help option is used together with other options, only Help information is returned.	conf -help
-dlog	Outputs the command result to html and txt files.	conf -all -dlog

Database commands (db)

Database commands collect information about the database that Service Manager uses.

The timeout for Database commands is 60 seconds.

Note: If you are running these commands with an Oracle database, you must create an OJDBC_LIB environment variable on the system and set its value to the Oracle driver path for the driver to be loaded successfully.

Option	Description	Usage
-version	Retrieves the database server version.	db -version
-info	Retrieves the server information: SQL Server: collation Oracle: character set information; case-sensitivity information DB2: DB configuration	db -info
-list	Retrieves the database (tablespace) list.	db -list
-timezone	Retrieves the database time zone and returns the time offset from the UTC/GMT time in hours.	db -timezone
-schema	Retrieves the table and index schema of the Service Manager database and outputs the information into an SM_schema.sql file. Note: This command works only with Oracle databases and requires that the sqlplus utility is installed on the system.	db -schema

Option	Description	Usage
-all	Runs all Database commands at one time and returns the results in the output.	db -all
-help	Displays Help information. <div style="background-color: #f0f0f0; padding: 5px;">Note: If the -help option is used together with other options, only Help information is returned.</div>	db -help
-dlog	Outputs the command result to html and txt files.	db -all -dlog

Operating System commands (os)

Operating System commands collect basic information about the current operating system.

The timeout for Operating System commands is 180 seconds.

Option	Description	Usage
-ip	Retrieves the server IP addresses.	os -ip
-diskspace	Retrieves the disk space on the server, including the total space and free space.	os -diskspace
-sys	Retrieves server system information. <ul style="list-style-type: none"> • Windows: systeminfo • AIX: prtconf • HPUX PA-RISC: model • HPUX ITATIUM: machinfo • Solaris: isainfo -kv • Linux: uname -a 	os -sys
-openfile	Retrieves the open file limit as returned by the <code>ulimit -n</code> command. <div style="background-color: #f0f0f0; padding: 5px;">Note: Only for UNIX.</div>	os -openfile

Option	Description	Usage
process	Retrieves all processes that are currently running. <ul style="list-style-type: none"> • Unix: ps -ef • Windows: wmic process get executablepath 	os -process
-ipcs	Retrieves the status of inter-process communication	os -ipcs
-sharedmemory	Retrieves the maximum size of shared memory and the count of shared memory segments. <ul style="list-style-type: none"> • Solaris: sysdef • Linux: sysctl -n • HPUX: kctune -v • AIX: Not available 	os -sharedmemory
-udpbuffer	Retrieves the UDP buffer size. <ul style="list-style-type: none"> • Solais: ndd -get • Linux: sysctl -n • AIX: no -o • HPUX: ndd -get 	os -udpbuffer
-all	Runs all Operating System commands at one time and returns the result in the output.	os -all
-help	Displays Help information. <div style="background-color: #e0e0e0; padding: 5px; margin-top: 10px;"> <p>Note: If the -help option is used together with other options, only Help information is returned.</p> </div>	os -help
-dlog	Outputs the command result to html and txt files.	os -all -dlog

Note: For Windows platforms, x86 represents the 32-bit version and x64 represents the 64-bit version.

Web Service commands (ws)

Web Service commands determine the Service Manager status by sending a simple SOAP request to the `http://localhost:13080/SM/ui` endpoint (when run on the local server) and checking the response.

The timeout for Web Service commands is 60 seconds.

Option	Description	Usage
-getpreferences	Returns the preference operation response. Note: Returns responses through HTTP server ports.	ws -getpreferences
-all	Runs all Web Service commands at one time and returns the result in the output. Note: Only one option is defined for the Web service command group now.	ws -all
-help	Displays Help information. Note: If the -help option is used together with other options, only Help information is returned.	ws -help
-dlog	Outputs the command result to html and txt files.	ws -all -dlog

Save commands (save)

Save commands save required files on the Service Manager server. Service Manager Doctor can save up to 10 Service Manager Doctor logs, and each log can have a maximum of 1 megabyte in size.

The timeout for Save commands is 50 seconds.

Option	Description	Usage
-report	Saves html and txt reports in the current directory.	save -report
-ini	Saves the ini file in the current directory.	save -ini
-cfg	Saves the cfg file in the current directory.	save -cfg

Option	Description	Usage
-lib	Saves the list of files in the lib folder in the current directory.	save -lib
-endorsed	Saves the list of files in the endorsed folder in the current directory.	save -endorsed
-run	Saves the list of files in the RUN folder in the current directory.	save -run
-ssoconfig	Saves the SSO configuration file in the RUN folder in the current directory. Note: This file does not always exist.	save -ssoconfig
-logs	Saves all logs generated for Service Manager	save -logs
-smdlog	Saves all Service Manager Doctor logs. Note: Service Manager Doctor logs are not collected by the run -all command.	save -smdlog
-udp	Saves the udp.xml file.	save -udp
-udpcluster	Saves the udpcluster.xml file.	save -udpcluster
-licfile	Saves the LicFile.txt file.	save -licfile
-clientcfg	Saves Windows client configurations if a Windows client is installed on this machine.	save -clientcfg
-tnsnames	Saves the tnsname.ora file for the Oracle database.	save -tnsnames
-dbschema	Saves the output file (SM_schema.sql) of the db -schema command for the Oracle database.	save -dbschema
-all	Runs all Save commands at one time and returns the result in the output.	save -all
-help	Displays Help information. Note: If the -help option is used together with other options, only Help information is returned.	save -help

Set commands (set)

The Set command group now includes only one command that sets the `-dlog` parameter.

Option	Description	Usage
<code>-dlog</code>	Enables or disables the <code>-dlog</code> option for all commands. However, the <code>-dlog</code> option specified in each command overrides this setting.	<pre>set -dlog true set -dlog 1 set -dlog false set -dlog 0</pre>
<code>-schemacheck</code>	Enables or disables database schema check for the <code>run -all</code> or <code>esm -all</code> commands.	<pre>set -schemacheck 1 set -schemacheck true set -schemacheck 0 set -schemacheck false</pre>
<code>-globallistcheck</code>	Enables or disables globallist blob field check for the <code>run -all</code> or <code>esm -all</code> commands.	<pre>set -globallistcheck 1 set -globallistcheck true set -globallistcheck 0 set -globallistcheck false</pre>
<code>-help</code>	Displays Help information. <div style="background-color: #f0f0f0; padding: 5px;"> <p>Note: If the <code>-help</code> option is used together with other options, only Help information is returned.</p> </div>	<pre>set -help</pre>

Run commands (run)

Run commands execute multiple commands or multiple command groups.

Option	Description	Usage
-sm	<p>Runs all Service Manager Runtime commands in a sequence and returns the results in the output.</p> <p>Note: Equivalent to <code>sm -all</code>.</p>	<p>run -sm -db -os</p>
-esm	<p>Runs all Extended Service Manager commands in a sequence and returns the results in the output.</p> <p>Note: Equivalent to <code>sm -all</code>.</p>	<p>run -esm -db</p>
-db	<p>Runs all Database commands at one time and returns the results in the output.</p> <p>Note: Equivalent to <code>db -all</code>.</p>	<p>run -db</p>
-conf	<p>Runs all Configuration commands at one time and returns the results in the output.</p> <p>Note: Equivalent to <code>conf -all</code>.</p>	<p>run -conf -dlog</p>
-os	<p>Runs all Operating System commands at one time and returns the results in the output.</p> <p>Note: Equivalent to <code>os -all</code>.</p>	<p>run -os</p>
-ws	<p>Runs all Web Service commands at one time and returns the results in the output.</p> <p>Note: Equivalent to <code>ws -all</code>.</p>	<p>run -ws</p>
-all	<p>Runs all commands at one time and returns the results in the output.</p> <p>Note: Performs a full health check.</p>	<p>run -all</p>

Option	Description	Usage
-zip	Packages all data to an sm_doctor_saved.zip file, which include the SM log files, endorsed file list, lib file list, html report, txt report, sm.cfg and sm.ini.	run -all -zip
-help	Displays Help information. Note: If the -help option is used together with other options, only Help information is returned.	run - help

Clear commands (clear)

The Clear command group deletes log files Service Manager Doctor generated, and clears the content of the current log file if the tool is still running.

Option	Description	Usage
-dlog	Clears Service Manager Doctor logs.	clear - dlog
-help	Displays Help information. Note: If the -help option is used together with other options, only Help information is returned.	clear - help

Help command (help)

The Help command displays help information.

'-dlog' parameter

The -dlog parameter is available for all commands except the "help" command. Adding this parameter to a command is equivalent to running `set -dlog true` or `set -dlog 1` except that the parameter included in the command overrides the global setting configured by `set -dlog false` and `set -dlog 0`.

Note: The reason why you may use the -dlog parameter instead of -log is that the -log

parameter itself is a valid parameter of Service Manager.

Configuration Validation Rules

This section describes the usage of validation rules in the Service Manager Doctor Tool.

Configuration rule file

Caution: It is not recommended that you edit the configuration rule file manually in this version of the tool.

The configuration rule file is an XML file with predefined rules that are used to validate Service Manager server configurations. All configuration information is based on the `sm.ini` and `sm.cfg` files, where `sm.cfg` is prioritized higher than `sm.ini`.

The elements of the configuration rule file include source, domain, rule, condition, conditionrule, operation, and output. Configuration rules for all configurations should be defined within the configuration source. Configuration rules used for specific validation should be defined within a specific domain. There can be multiple domains within each source, and multiple rules within each domain. See ["Rule Configuration File Snippets" on page 36](#).

Considerations for updating the rule file

- This tool includes an `SM_Configuration_Rule.xsd` file to maintain the integrity of the rule file. Detailed messages are displayed in the validation results, including information about the row, column, and other violation specifics.
- If one rule serves as a condition for another rule, the first rule cannot have conditions of its own. Or, a `TWO_LEVEL_CONDITION_FOUND` error is returned.
- For operation elements within a rule element, the "param" and "action" attributes are required. The "target" and "type" attributes are optional, but they are mutually dependent. If one parameter is defined, you must define the other one too.
- For condition elements, if "operator" and "target" are not defined, they default to `and` and `true` respectively.

- In addition to customized rules, you can use the generic rules directly: `is320S`, `is640S`, `isUnix`, and `isWindows`.
- An error 100018 is returned if the XML content cannot be parsed.
- In the current version of the tool, only the configuration data source is editable, which includes both the `sm.ini` and `sm.cfg` files.

Validation results

Validation results are included as part of the command output for the `conf -ini` and `conf -cfg` commands in command-line mode. In GUI mode, a separate column is displayed next to the command results if a rule failure is detected.

CmdOnDemand.xml

A typical CmdOnDemand.xml file resembles the following codes:

```
<?xml version="1.0" encoding="UTF-8"?>
<commands>
<command name="sm" description="sm server commands" provider="hp">
  <param name="-reportstatus" description="SM runtime status"/>
  <param name="-reportcache" description="SM cache status"/>
  <param name="-reportipc" description="SM semaphore use"/>
  <param name="-reportlocks" description="SM lock information"/>
  <param name="-reportlic" description="SM licence information"/>
  <param name="-version" description="SM version"/>
  <param name="-verifylic" description="SM verify license"/>
  <param name="-appversion" description="SM application version"/>
  <param name="-reportshm" description="SM shared memory"/>
  <param name="-reportsem" description="SM semaphore"/>
  <param name="-sqlverifyconnection" description="SM verify DB connection"/>
</command>
<!--
Any command or script should be under RUN directory to be run with SM doctor;
more entries could be added like below.
<command name="supportTool.sh" description="Integration with existing support
tool to trace system information" />
-->
</commands>
```

To add a new command to the CmdOnDemand.xml file, follow these steps:

1. Open the CmdOnDemand.xml file in a text editor.
2. Add more entries similar to **<param name="-version" description="SM version"/>**.
3. Add the required Service Manager command parameters in the "name" attribute.

4. Add the command description in the "description" attribute, which will be used for HTML/TEXT report generation.

Note: To run external commands, make sure that the target scripts or executables reside in the RUN directory. Do not add "param" elements for additional command arguments. Instead, include command arguments in the "name" attribute of the "command" element.

We do not recommend that you run external commands that work with background processes or I/O streams, such as `uname -a &` and `ls -lrt > 1.txt`.

HTML Log Snippets

The Extended Service Manager report sample is shown in the screenshot below:

SM Extended Information				
Time	Command	Description	Result	
2012-01-15 11:52:41	esm -javaversion	SM server java version more>	1.6.0_21	
2012-01-15 11:52:41	esm -perf	SM process CPU and memory information more>	PID RUSER %CPU VSZ TIME COMMAND 10754 fpeSandy 0.0 601880 01:28 /home/fpeSandy/sm921p4/RUN/smsserver 10822 fpeSandy 0.0 670224 07:38 /home/fpeSandy/sm921p4/RUN/smsserver system.start	
2012-01-15 11:52:43	esm -port	SM server port status	*.13091 ** 0 0 49152 0 LISTEN	
2012-01-15 11:52:43	esm -apppatch	SM app patch information	[100021]Patch information is not available. (The table does not exist)	
2012-01-15 11:52:43	esm -apphotfix	SM app hotfix information	[100021]Hotfix information is not available. (The table does not exist)	
2012-01-15 11:52:43	esm -apptablemerge	SM app table merge check more>	Primary Table Name Sub Table Exists	
			cm3r	NO
			cm3rpage	NO
			cm3t	NO
			incidents	NO
2012-01-15 11:52:43	esm -appbp	SM app best practice information	[100021]Best practice information is not available. (The table does not exist)	
2012-01-15 11:52:43	esm -appfieldmigration	SM app table field check more>	No unexpected field is found in this table CM3GROUPSM1 No unexpected field is found in this table CIRELATIONSM1	
2012-01-15 11:52:44	esm -keystore	SM certificate check more>	[100042]Keyfile cacerts does not exist [100042]Keyfile server.keystore does not exist [100042]Keyfile trustedclients.keystore does not exist	
2012-01-15 11:52:44	esm -apprecordcount	SM app table record count more>	SYSLOGM1 : 126 STATHISTORYM1 : 478 EVENTINM1 : 0 SYSTEMPERFORMM1 : 0 SYSTEMTOTALSM1 : 0 CLOCKSM1 : 210 ACTIVITYM1 : 305	

The Database report sample is shown in the screenshot below:

SM Database Information									
Command	Description	Result							
db -version	Database server version	Microsoft SQL Server 2008 (RTM) - 10.0.1600.22 (Intel X86) Jul 9 2008 14:43:34 Copyright (c) 1988-2008 Microsoft Corporation Enterprise Edition on Windows NT 6.0 (Build 6002; Service Pack 2)							
db -timezone	Database server timezone	Offset from UTC/GMT time(h) in database server : 8 Current Timezone : West Australian Standard Time and USSR Zone 7 [WAST][+08 (east)] Asia/Brunei Asia/Choibalsan Asia/Chongqing Asia/Chungking Asia/Harbin Asia/Hong_Kong Asia/Irkutsk Asia/Kashgar Asia/Kuala_Lumpur Asia/Makassar Asia/Manila Asia/Shanghai Asia/Singapore Asia/Taipei Asia/Ujung_Pandang Asia/Ulaanbaatar Asia/Ulan_Bator Asia/Urumqi Etc/GMT-8 Hongkong PRC Singapore							
db -info	Database server information more>	SQL Server Name:QLU3 SQL Driver Name:C:\Windows\system32\SQLSRV32.dll Database Name:SM9 Last User:SM9ADMIN SQL Server Collation: SQL_Latin1_General_CP1_CI_AS							
db -list	Database List more>	<table border="1"> <thead> <tr> <th>name</th> <th>db_size</th> <th>owner</th> </tr> </thead> <tbody> <tr> <td>SM9</td> <td>26574.13 MB</td> <td>sa</td> </tr> </tbody> </table>	name	db_size	owner	SM9	26574.13 MB	sa	
name	db_size	owner							
SM9	26574.13 MB	sa							

Rule Configuration File Snippets

SM_Configuration_Rule.xml snippet

```
<?xml version="1.0" encoding="UTF-8"?>
<xml xmlns:xsi="http://www.w3.org/2001/XMLSchema-instance"
      xsi:noNamespaceSchemaLocation="SM_Configuration_Rule.xsd" version="1.0">
  <source id="configuration" description="service manager configuration validation
  rules">
  ...
  <domain id="StartUp" description="validate sm startup configuration" >
    <rule id="sync" description="validate synch parameter" >
      <operation param="sync" action="ValidateIsNotNull" />
    </rule>
    <rule id="systemstart" description="validate system.start" >
      <operation param="system.start" action="ValidateIsNotNull" />
    </rule>
    <rule id="startuprule" description="validate startup by combination of
  sync and system.start" >
      <condition operator="and" target="false">
        <conditionrule id="sync" />
        <conditionrule id="systemstart" />
      </condition>
      <output type="failed" message="failed: sync and system.start
  processes should not
  be started at the same, the recommendation is to remove sync from configuration.
  For further information,
  please refer to "Configuring a horizontal scaling environment" on help server." />
      <output type="success" message="success: sync and system.start
  are not set both" />
    </rule>
  </domain>
  .....
```

SM_Configuration_Rule.xsd snippet

```
<xs:complexType name="rule_type">
  <xs:sequence>
    <xs:element name="condition" minOccurs="0" type="condition-type">
      <xs:unique name="NoRepeatConditionRule">
<xs:selector xpath="conditionrule"/>
<xs:field xpath="@id"/>
</xs:unique>
        </xs:element>
        <xs:element name="operation" minOccurs="0" type="operation_type">
          </xs:element>
          <xs:element name="output" minOccurs="0" maxOccurs="unbounded"
type="output_type">
            </xs:element>
          </xs:sequence>
          <xs:attribute name="id" type="xs:string" use="required" />
          <xs:attribute name="description" type="xs:string" use="optional" />
          <xs:attribute name="mode" use="optional" >
          <xs:simpleType>
            <xs:restriction base="xs:string">
              <xs:enumeration value="multiple" />
              <xs:enumeration value="single" />
            </xs:restriction>
          </xs:simpleType>
          </xs:attribute>
        </xs:complexType>
```

Error References

The following table lists the possible errors that the Service Manager Doctor commands may return.

Error Code	Description	Category	Error Message (partial)
100000	SYS_ERROR	SYSEERROR	System error, please reach support team...
100001	UNKNOWN_ERROR	SYSEERROR	Unknown error, please try again later or reach SM Doctor admin for a solution.
100002	COMMAND_NOT_EXIT	PARSEERROR	This command <i><command></i> is not recognizable, please enter again.
100003	NO_SUCH_OPTION	PARSEERROR	This option <i><option></i> is not recognizable for this command, please enter again
100004	NO_SUCH_PARAMETER	PARSEERROR	<i>Xxx</i> is not passed to any parameter, please enter again.
100005	ARGU_NOT_EXIT	PARSEERROR	This argument <i><argument></i> is not recognizable, please enter again.
100006	ONLY_LOG_ERROR	PARSEERROR	Log option <i><option></i> is only valid with another command line option, please enter again.
100007	HELP_LOG_ERROR	PARSEERROR	Log option is not valid with help option, please enter again.
100008	HELP_ERROR	PARSEERROR	Help option is valid by <i><command></i> -help without other options. Please enter again.
100009	DUPLICATE_ERROR	PARSEERROR	Duplicate options are found, please remove the same ones and keep each unique.
100010	LOG_PARAM_ERROR	PARSEERROR	Only true(1) or false(0) is allowed for this option.
100011	NODATA	NODATA	No data is available for this command.
100012	DB_DRIVER_ERROR	DBERROR	Database driver can not be loaded.
100013	SQL_EXCEPTION	DBERROR	SQLException is caught ...
100014	TABLE_DOES_NOT_EXIT	DBERROR	This table <i><table_name></i> does not exit.

Error Code	Description	Category	Error Message (partial)
100015	SM_NOT_FOUND	SYSERROR	Service Manager is not found, please check.
100016	SM_NOT_RUNNING	SYSERROR	Service Manager is not running, please check.
100017	COMMAND_TIMEOUT	SYSERROR	Command execution timeout.
100018	UNSATISFIED_LINK_ERROR	DBERROR	Unsatisfied link error.
100019	RULE_PARSING_ERROR	SYSERROR	Exception happened when parsing XML rule configuration file.
100020	OTHER_PARSE_ERROR	PARSEERROR	Invalid input <i><input></i> .
100021	INFO_NOT_AVAILABLE	SYSERROR	<i>Xxx</i> information is not available.
100022	RECORD_COUNT_EXCEED_THRESHOLD	DBERROR	The record count in table <i><table_name></i> exceeds threshold <i><threshold_value></i> , purge/ archive is needed.
100023	TABLE_MERGE_NEEDED	DBERROR	M2/M3 tables exist for <i>xxx</i> , table merge is needed.
100024	FIELD_NOT_EXPECTED	DBERROR	This field <i>xxx</i> is not expected in table...
100025	ORACLE_DRIVER_NOT_FOUND	DBERROR	Oracle driver could not be loaded, please make sure driver's jar exists under <i>xxx</i> .
100026	GLOBALLISTS_VALUELIST_LENGTH_EXCEED_THRESHOLD	DBERROR	Valuelist length of <i>xxx</i> keys in globallists table exceeds threshold.
100027	DATABASE_AUTH_FAILED	DBERROR	Username or password is invalid, database could not be connected.
100028	FILE_NOT_SAVED	FILEERROR	File could not be saved.
100029	FILES_NOT_FULLY_SAVED	FILEERROR	Files could not be (fully) saved.
100030	FILE_NOT_EXISTS	FILEERROR	<i>xxx</i> does not exist.
100031	FILES_NOT_EXIST	FILEERROR	<i>xxx</i> do not exist.
100032	NO_NEED_TO_SAVE_TNS_NAMES	FILEERROR	No need to save tnsnames.ora for <i>xxx</i> .
100033	NO_CLIENT_CONF_SAVED	FILEERROR	No running sm client is detected, no

Error Code	Description	Category	Error Message (partial)
			configuration files could be saved.
100034	WEBSERVICE_AUTH_FAILED	WEBSERVICE ERROR	Username or password is invalid, server could not be connected.
100035	WEBSERVICE_TIMEOUT	WEBSERVICE ERROR	Timeout for this soap request.
100036	UNSUPPORTED_OS	SYSERROR	SM Doctor does not support this operating system <i><system_name></i> .
100037	SSL_ENABLED	WEBSERVICE ERROR	Web service call is not done because SSL is enabled, you can start a SSL disabled process to run this command.
100038	UNSUPPORTED_DB	DBERROR	SM Doctor does not support this database.
100039	CMD_LIMITED_TO	SYSERROR	This command is limited to <i>xxx</i> .
100040	KEYTOOL_ERROR	FILEERROR	Keytool error happened by checking <i>xxx</i> .
100041	NO_LOCAL_PING	SYSERROR	Only vertical scaling setting is found, local host ping/ tracert is skipped.
100042	KEYFILE_NOT_EXIST	SYSERROR	Keyfile <i><filename></i> does not exist.
100043	PARAMETER_NOT_EXIST	SYSERROR	Parameter <i><parameter></i> is not configured.
100044	SQLPLUS_NOT_FOUND	DBERROR	Sql plus is not found, please set its path in <i><variable></i> .

Troubleshooting

Issue 1: Environment setting issues leading to coredump

Symtoms

The coredump happens with the following error messages:

```
/usr/lib/dld.sl: Bad magic number for shared library: <library>  
/usr/lib/dld.sl: Exec format error
```

Resolution

Verify that the database driver path is set correctly in the corresponding library path environment variable and that the driver exists in the specified path.

Issue 2: 'db -version' command returns wrong results on DB2

Symtoms

The following database connection error message is displayed when database connection fails for 'db -version' on DB2:

```
[100012]Database driver cannot be loaded,  
please double check LIBPATH, and make sure 32 bit lib exists and is ahead of 64  
bit.
```

Resolution

Run `db2level` under `db2` command shell directly to get database information if necessary. This is to be fixed in next release, since `db2` version information could be returned when connection fails.

Send Documentation Feedback

If you have comments about this document, you can [contact the documentation team](#) by email. If an email client is configured on this system, click the link above and an email window opens with the following information in the subject line:

Feedback on SM Doctor User's Guide (Service Manager 9.41)

Just add your feedback to the email and click send.

If no email client is available, copy the information above to a new message in a web mail client, and send your feedback to ovdoc-ITSM@hp.com.

We appreciate your feedback!

