

# Vertical Scaling and Required SSL Implementation Overview

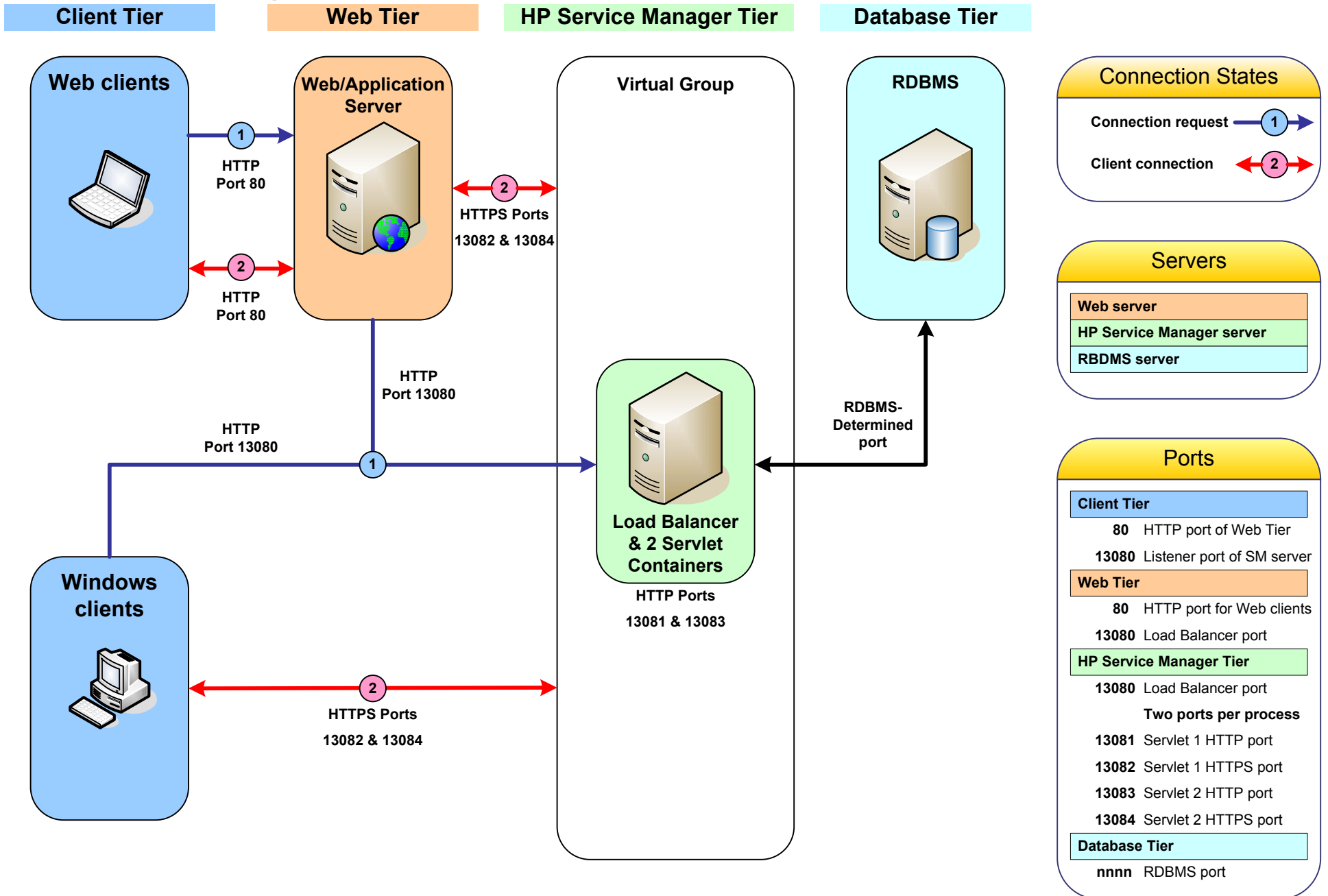
**This implementation is intended for customers who:**

- Want to maximize the number of client connections supported on a single host
- Have a host with enough system resources to manage all concurrent client connections
- Want to specify the communications ports the HP Service Manager implementation uses
- Want to require SSL encryption for all connections

## Sample implementation

		<b>Note:</b> Sample values are for illustration only
<b><u>Capacity Planning</u></b>		
Desired total capacity	<input type="text" value="100"/>	
Desired capacity per host	<input type="text" value="100"/>	
<b><u>Processes and Threads</u></b>		
Desired number of threads per process	<input type="text" value="50"/>	Default
Number of servlet containers required per host to meet "Desired capacity per host"	<input type="text" value="2"/>	
<b><u>Hardware Requirements</u></b>		
Number of hosts required to meet "Desired total capacity"	<input type="text" value="1"/>	
<b><u>Communications Ports</u></b>		
Number of load balancer ports required	<input type="text" value="1"/>	
Number of client connection ports required per host	<input type="text" value="2"/>	

# Vertical Scaling Required SSL Implementation Connection States



# Vertical Scaling Required SSL Implementation Settings

