

Vertical Scaling Implementation Overview

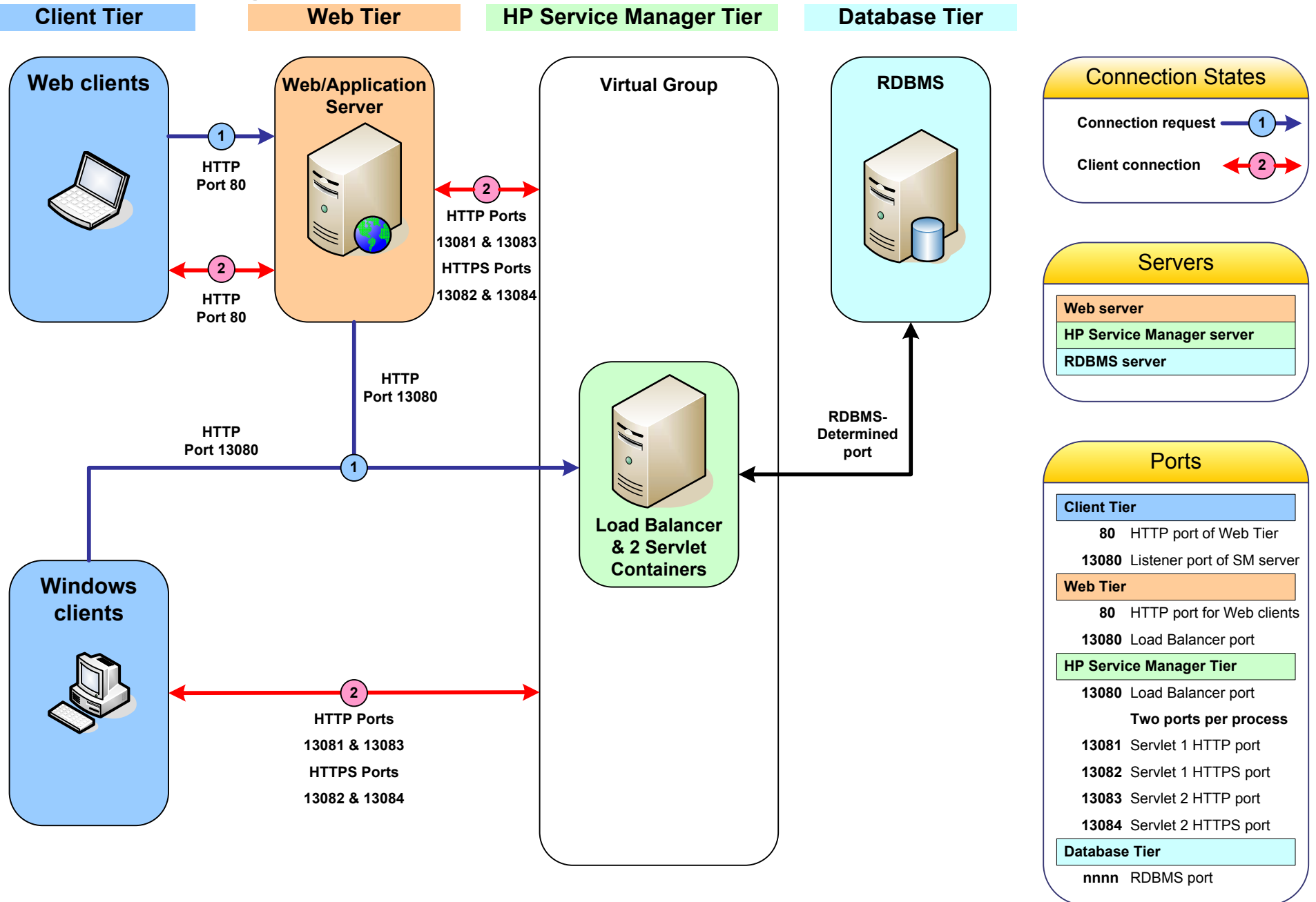
This implementation is intended for customers who:

- Want to maximize the number of client connections supported on a single host
- Have a host with enough system resources to manage all concurrent client connections
- Want to specify the communications ports the HP Service Manager implementation uses

Sample implementation

		Note: Sample values are for illustration only
<u>Capacity Planning</u>		
Desired total capacity	<input type="text" value="100"/>	
Desired capacity per host	<input type="text" value="100"/>	
<u>Processes and Threads</u>		
Desired number of threads per process	<input type="text" value="50"/>	Recommended
Number of servlet containers required per host to meet "Desired capacity per host"	<input type="text" value="2"/>	
<u>Hardware Requirements</u>		
Number of hosts required to meet "Desired total capacity"	<input type="text" value="1"/>	
<u>Communications Ports</u>		
Number of load balancer ports required	<input type="text" value="1"/>	
Number of client connection ports required per host	<input type="text" value="2"/>	

Vertical Scaling Implementation Connection States



Vertical Scaling Implementation Settings

